

Plays at the Plate “Working the WEDGE”

By: Charlie Traber



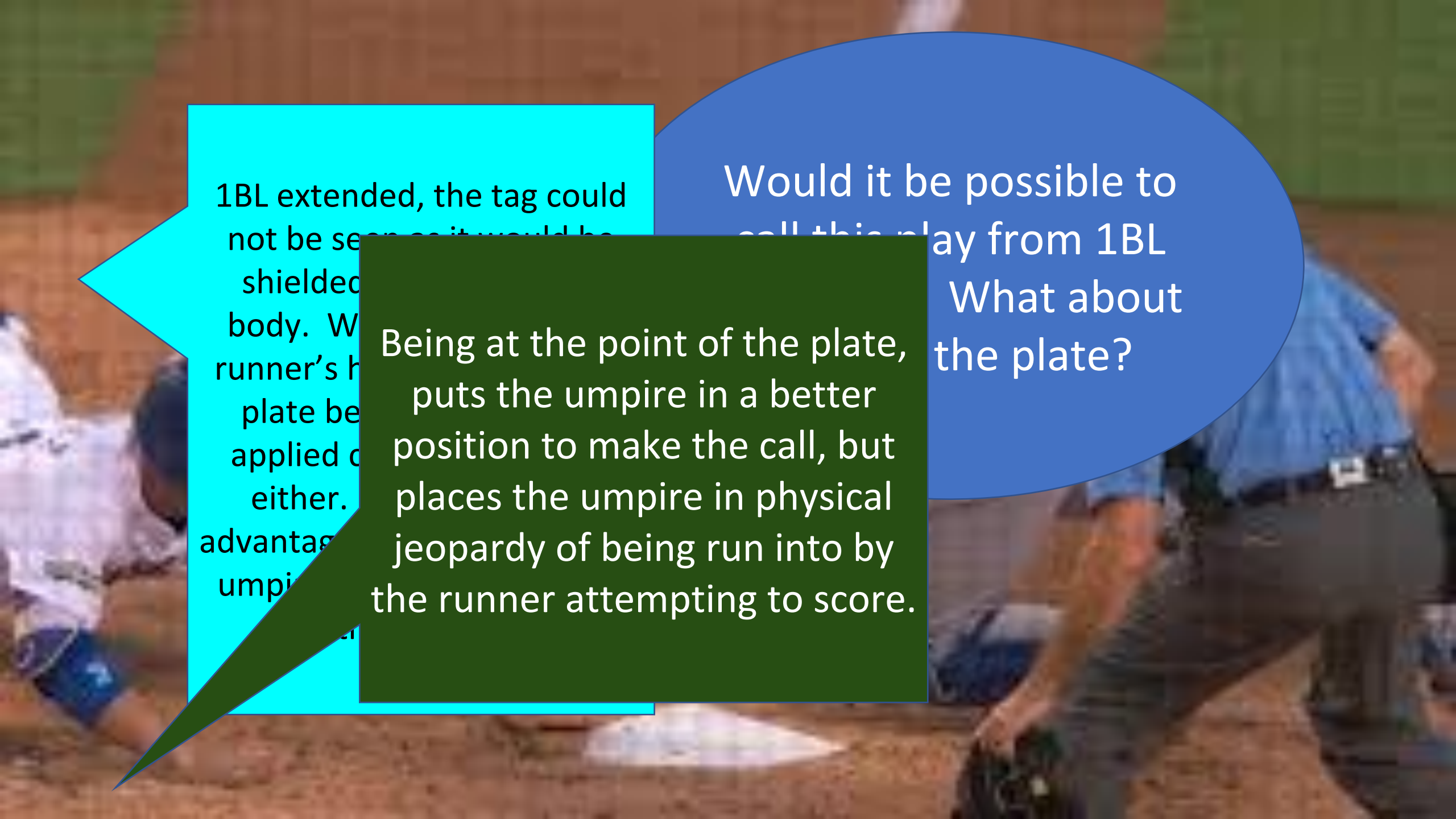
What is the “WEDGE”?

- The “WEDGE” is the view created by viewing the play at the time the glove makes contact with the runner.
- The wedge can be applied on all tag plays, but it is not appropriate to be used in the two-umpire system. This should only be used for crews of 3 and 4 umpires.



Why do we need to work
the “WEDGE”?

- Prevalence of right-handed catchers.
 - There have been no left-handed catchers in MLB since 1989. (Benny Distefano – Pittsburgh Pirates).
- Catchers are taught to catch throws in front of home plate and tag with a swiping motion towards the runner.
- Runners are taught to slide to the outside of home plate, away from catchers attempting to make a tag.
- Places umpires out of harm's way and places them in the best position to call the play correctly.

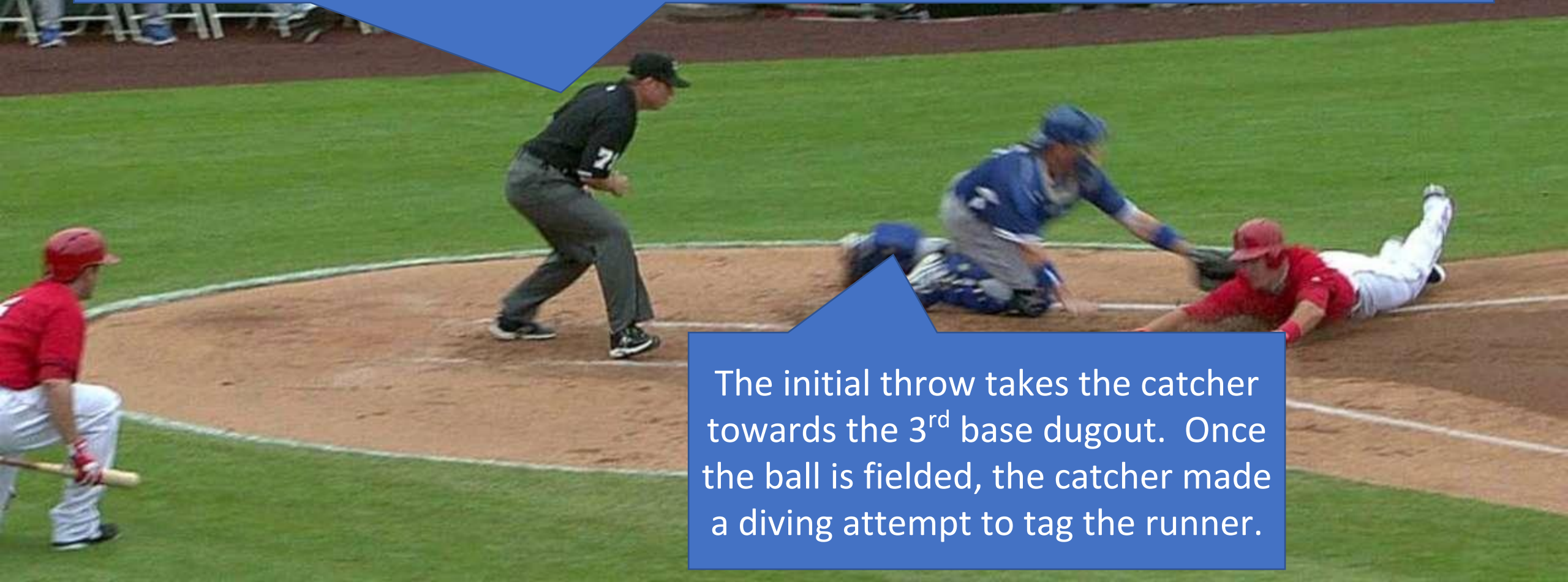


1BL extended, the tag could not be seen as it would be shielded by the runner's body. When the runner's head plate becomes applied to either. This advantage is an umpire's

Being at the point of the plate, puts the umpire in a better position to make the call, but places the umpire in physical jeopardy of being run into by the runner attempting to score.

Would it be possible to call this play from 1BL
What about the plate?

If you notice, on this play at the plate, the 1B umpire has rotated to home plate to cover a play at the plate. The runner began the play at 1B. And on a double, this play at the plate occurred. It is likely this will not happen in high school baseball, but the mechanics of calling the play at the plate is the same.



The initial throw takes the catcher towards the 3rd base dugout. Once the ball is fielded, the catcher made a diving attempt to tag the runner.

This is yours truly during a game last season. I love this picture because you can see the glove and the tag, but I am not in the optimal position because this is R1 and I had initially moved too far to 3rd base on a base hit that was misplayed by the CF and went to the fence.



<https://www.youtube.com/watch?v=OSLTrGIGnms>